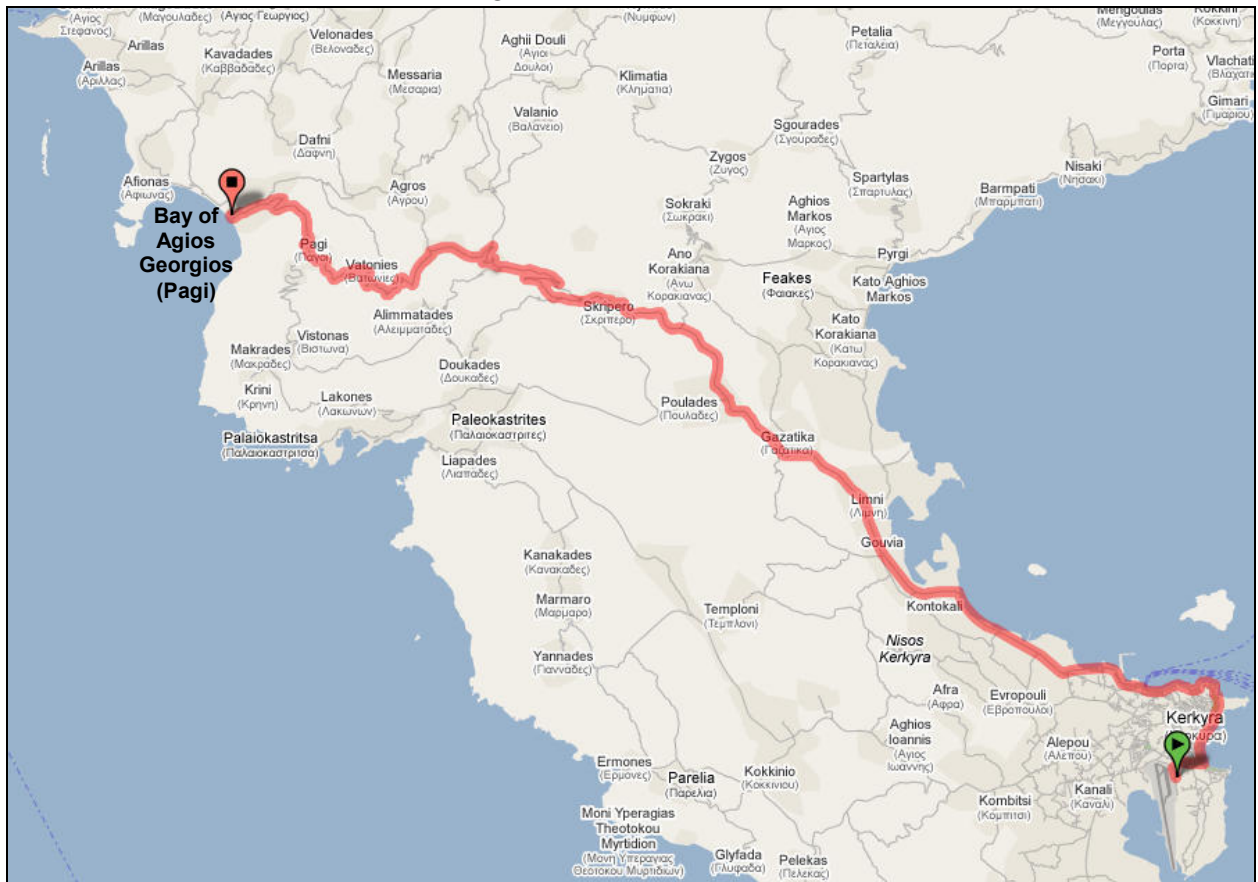
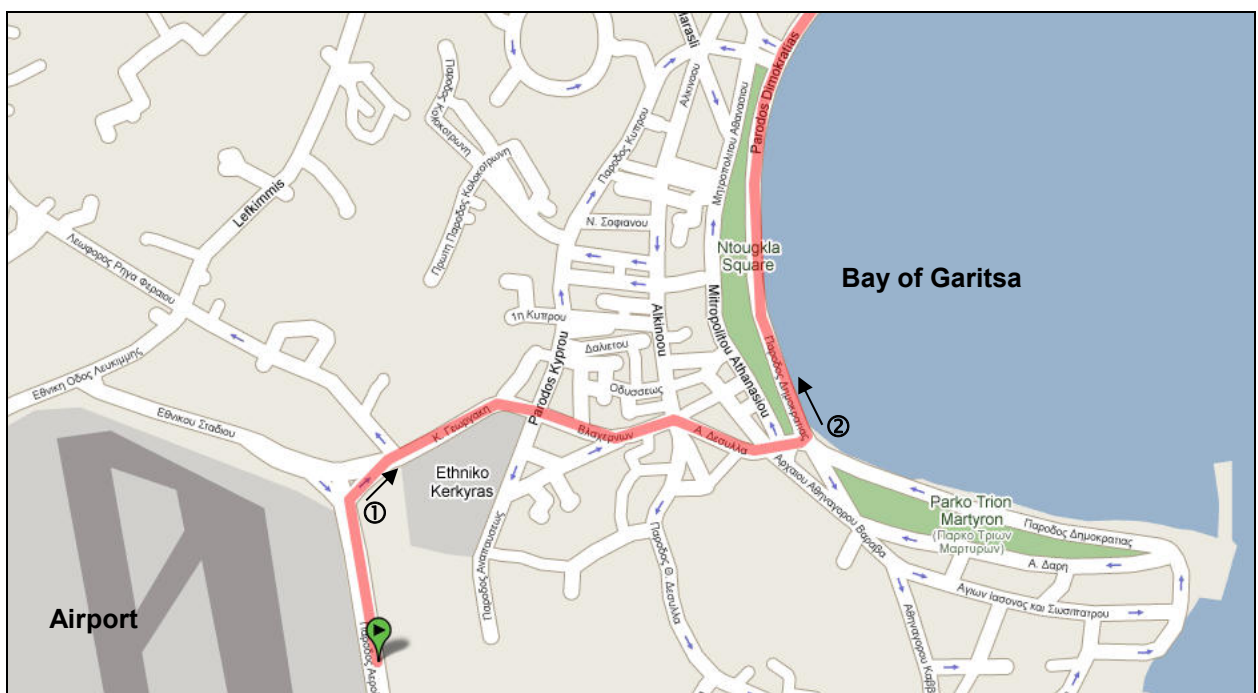


Directions

Overview of the route:



Coming from the Airport please turn right at the end of the airport area (①) and follow the road until you reach the bay of Garitsa (see map below). The taxis normally take a different route but that would be more difficult for you. When you reach the bay of Garitsa turn left (②).



Now just follow the road and drive along the sea around Kerkyra (Corfu Town). On your way you can already throw a glance at the two forts in Kerkyra. You will pass the old part of the town and will automatically come by the harbour (③) if you stay on this road.

Coming from the harbour (by ferry) please make a right turn when you reach the harbour exit.

From here the directions are the same no matter if you come by plane or ferry.



Please follow the road along the sea in direction to „Paleokastritsa“. Approximately after 14,5 km you have to turn right at a junction (④) (see map below) over a bridge in direction to „Sidari“ and „Agios Georgios“. Now please follow the road for a while.



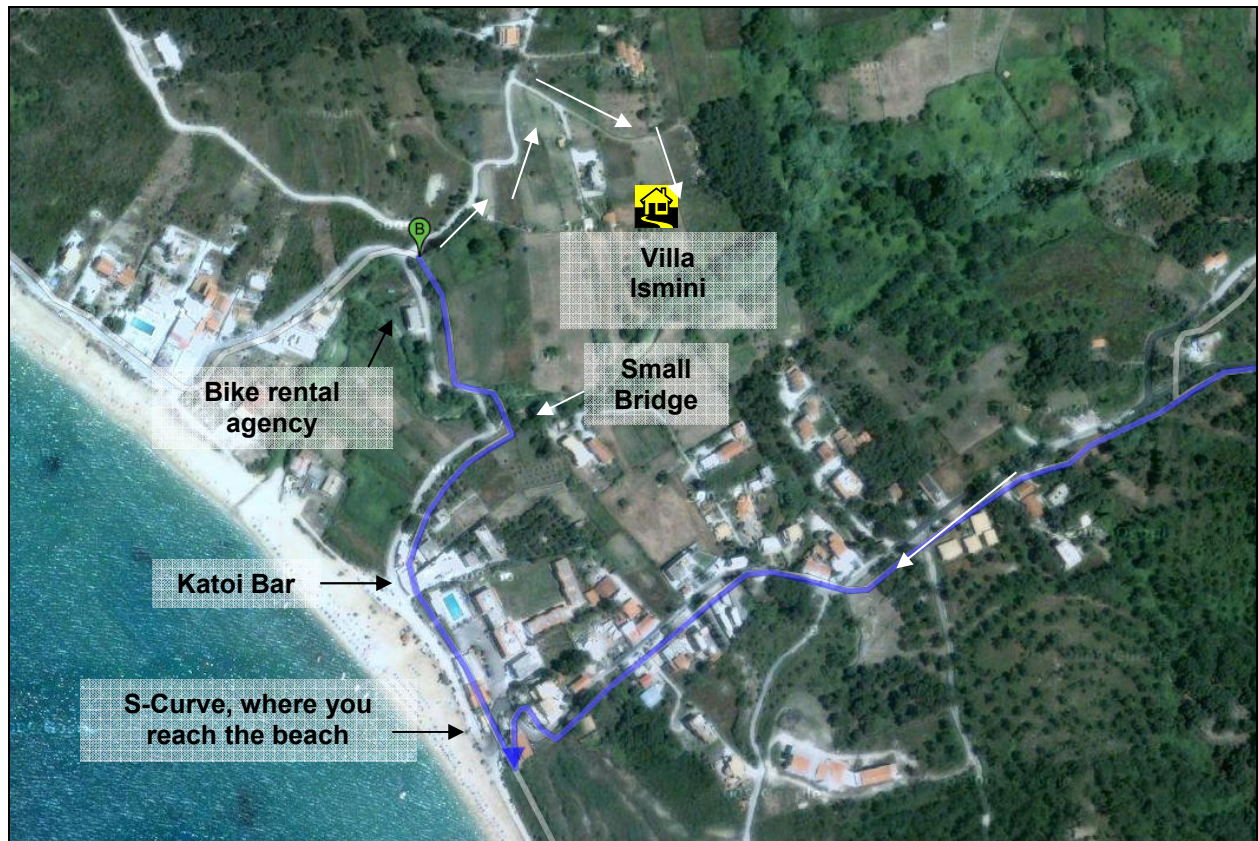
When you leave the village „Skripero“ driving uphill there will be a lot of serpentes before you reach the „Troumbeta“ pass and leave the village „Troumbetas“. Just follow the road. Now the road is going downhill in serpentes. At the next junction slightly keep to the left in direction to „Agios Georgios“.

Approximately 1,5 km after this junction you come to a junction before a house wall (5). Please turn left here in direction to „Pagi“, „Prinilas“, „Agios Georgios Beach“.

Following the road (serpentes) you pass the village „Vatonies“ and reach the village „Pagi“.



Right at the city limit of Pagi please turn right (Ⓢ) (downhill) in direction to „Agios Georgios Beach” and follow the road. Approximately after 3 km you reach the bay and the beach of Agios Georgios Pagi where you have to turn right (Ⓣ). Now please orientate on the map below.



Follow the road along the beach for about 150 m. When you reach the Katoi Bar (on the right side) the road makes a bend to the right. Approximately 150 meters later the road passes a small bridge (left turn). After you passed the bridge you will see a bike rental agency on the left. After you passed that bike rental agency please turn right and follow the road for about 150 m.

Now please turn right onto the small field path that leads to Studios Alexmar/ Apartments Palmenhaus and to Villa Ismini. There is a small fork after a few meters. Keep left at this fork (do not turn right to the Studios Alexmar/Apartments Palmenhaus). The road now makes a slight bend to the left. After about another 50 meters please turn right. The house Ismini is located about 50 meters further on the right side. You can park in the carport on the property.